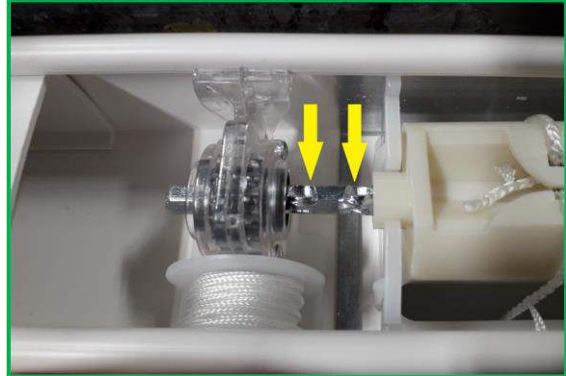
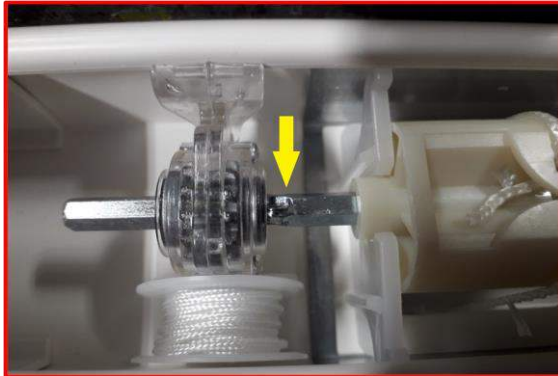


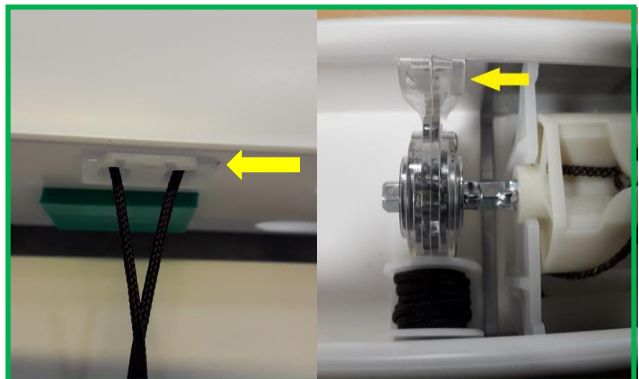
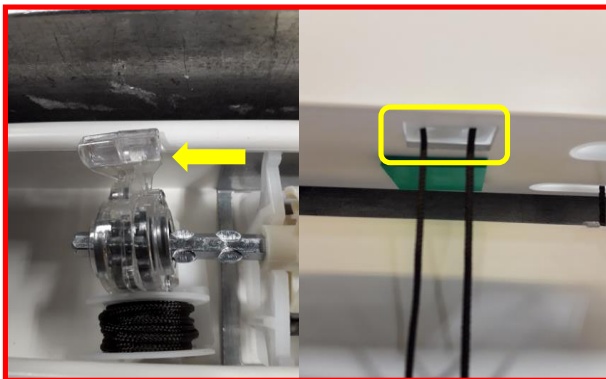
Troubleshooting Guide for Fauxwood Tilter issues

Are you experiencing issues with your blind not tilting?
Please see below potential causes & their simple fixes.

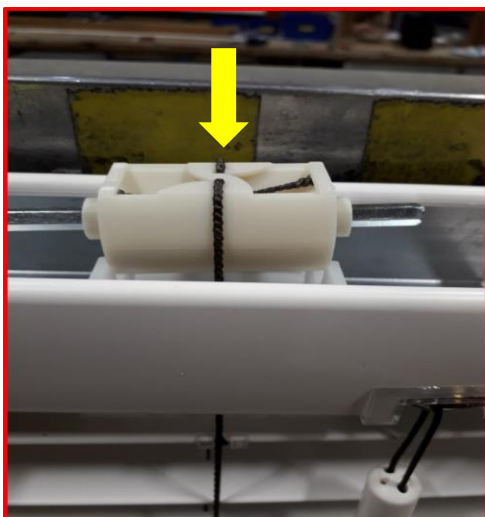
Check if the tilt rod inside the headrail is blocking the operation of the tilting mechanism.
If it does, move it slightly to the right so you can see both indents



Check if the tilting mechanism has moved out of position.
The front side of the tilt mech should be pushed down into the punchhole at the front and then the back should be pushed down until it clicks in the back of the headrail.



Check if the tape roll has moved from position.
If it has, push it back in the tape roll holder.



Make sure that the installation brackets are not obstructing the movement of the ladders/tapes.
If they are please re-position the brackets.

